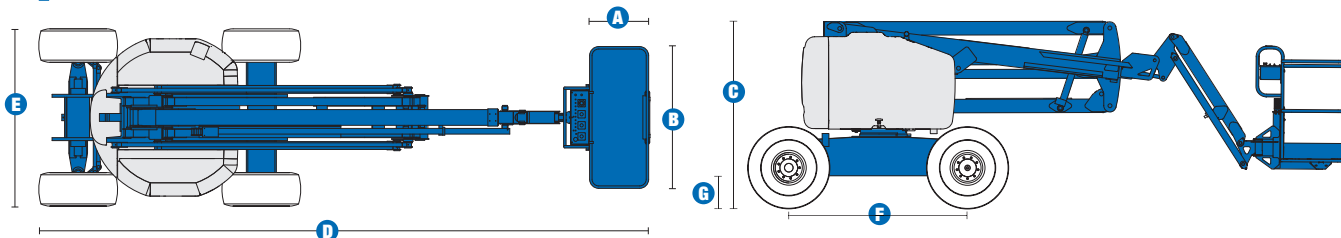


Z™-51/30J RT

Specifications



MODEL Z™-51/30J RT

MEASUREMENTS	Metric	US
Working height maximum*	17.62 m	57 ft 3 in
Platform height maximum	15.62 m	51 ft 3 in
Horizontal reach maximum	9.25 m	30 ft 4 in
Up-and-over clearance at primary arm	7.47 m	24 ft 6 in
A Platform length	0.76 m	2 ft 6 in
B Platform width	1.83 m	6 ft
C Height - stowed	2.16 m	7 ft 1 in
D Length - stowed	7.50 m	24 ft 6 in
E Width	2.29 m	7 ft 6 in
F Wheelbase	2.03 m	6 ft 8 in
G Ground clearance - centre	0.39 m	1 ft 3.5 in

PRODUCTIVITY

Lift capacity	227 kg	500 lbs
Platform rotation	160°	160°
Vertical jib rotation	135°	135°
Turntable rotation	355° non-continuous	
Turntable tailswing	zero	zero
Drive speed - stowed	8 km/h	5 mph
Drive speed - raised**	1.1 km/h	0.6 mph
Gradeability - 4WD - stowed***	45%	45%
Turning radius - inside	1.68 m	5 ft 6 in
Turning radius - outside	4.50 m	14 ft 9 in
Controls	12V DC proportional	
Tyres - RT Lug - Foam filled	355/55 D625	

POWER

Power source	Deutz L03i 2011 3 cylinder diesel 48 hp (35.8 kW)	
Auxiliary power unit	12V DC	12V DC
Hydraulic tank capacity	90.8 L	24 gal
Fuel tank capacity	64.4 L	17 gal

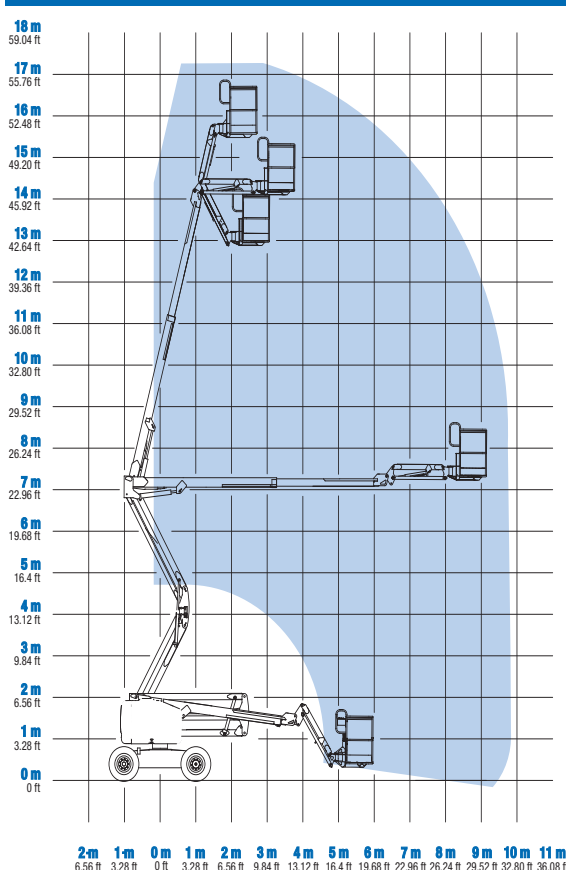
WEIGHT****

	7,212 kg	15,900 lbs
--	----------	------------

STANDARDS COMPLIANCE CE EN280, PB-10-611-03

* The metric equivalent of working height adds 2 m to platform height. U.S. adds 6 ft to platform height.
 ** In lift mode (platform raised), the machine is designed to operate on firm, level surfaces only.
 *** Gradeability applies to driving on slopes. See Operator's Manual for details regarding slope ratings.
 **** Weight will vary depending on options and/or country standards.

RANGE OF MOTION Z™-51/30J RT



2m 1m 0m 1m 2m 3m 4m 5m 6m 7m 8m 9m 10m 11m
 6.56 ft 3.28 ft 0 ft 3.28 ft 6.56 ft 9.84 ft 13.12 ft 16.4 ft 19.68 ft 22.96 ft 26.24 ft 29.52 ft 32.80 ft 36.08 ft

Features

STANDARD FEATURES

MEASUREMENTS

- 17.62 m (57 ft 3 in) working height
- 9.25 m (30 ft 4 in) horizontal reach
- 7.16 m (23 ft 6 in) up-and-over clearance
- Up to 227 kg (500 lbs) lift capacity

PRODUCTIVITY

- 1.83 m (6 ft) steel platform
- 1.52 m (5 ft) jib boom with 135° working range
- 4WD
- Active oscillating axle
- Rough terrain foam-filled tyres
- Self-levelling platform
- Hydraulic platform rotation
- Fully proportional controls
- Drive enable system
- Horn
- Hour meter
- Tilt alarm
- 355° non-continuous turntable rotation
- Zero tailswing
- Positive traction drive
- Thumb rocker steer joystick
- Alarm package
- Dual flashing beacons

POWER OPTIONS

- 12 V DC auxiliary power
- Deutz Diesel LO3i 2011 35.8 kW (48 hp)
- Engine protection package
- Deutz intake air heater

OPTIONS & ACCESSORIES

PRODUCTIVITY

- Platform swing gate
- Half mesh platform inserts with swing gate
- Platform top auxiliary rail
- Air line to platform
- Basic hostile environment kit
- Tool tray
- Fluorescent tube caddy
- Pipe cradle (pair)
- Platform work lights
- Front driving lights
- Lockable platform control box covers
- Tow package
- 1.22 m or 1.52 m (4 or 5 ft) steel platform
- Rough terrain non-marking foam-filled tyres

POWER OPTIONS

- Engine gauge package
- 7 kVA hydraulic AC generator (220 V/50 hz)
- Arctic hoses
- Diesel scrubber/spark arrestor
- Diesel spark arrestor muffler
- 240 V power to platform



Genie Australia – Toll free number 1800 788 633

Brisbane (Head Office)
33 Kimberley Street
Darra QLD 4076

Sydney
74 Glendenning Road
Glendenning NSW 2761

Melbourne
374 Hammond Road
Dandenong VIC 3175

Perth
83 Bannister Road
Canning Vale WA 6155

Genie United States Distributed by:

18340 NE 76th Street
P.O. Box 97030
Redmond, Washington
98073-9730

Effective date: April, 2009. Product specifications and prices are subject to change without notice or obligation. The photographs and/or drawings in this document are for illustrative purposes only. Refer to the appropriate Operator's Manual for instructions on the proper use of this equipment. Failure to follow the appropriate Operator's Manual when using our equipment or to otherwise act irresponsibly may result in serious injury or death. The only warranty applicable to our equipment is the standard written warranty applicable to the particular product and sale and we make no other warranty, expressed or implied. Products and services listed may be trademarks, service marks or trade-names of Terex Corporation, Genie Industries, Inc. and/or their subsidiaries in the U.S.A. and many other countries. All rights are reserved. Terex is a Registered Trademark of Terex Corporation in the U.S.A. and many other countries. Genie is a Registered Trademark of Genie Industries, Inc in the U.S.A. and many other countries. Genie is a Terex Company. Copyright 2009 Terex Corporation