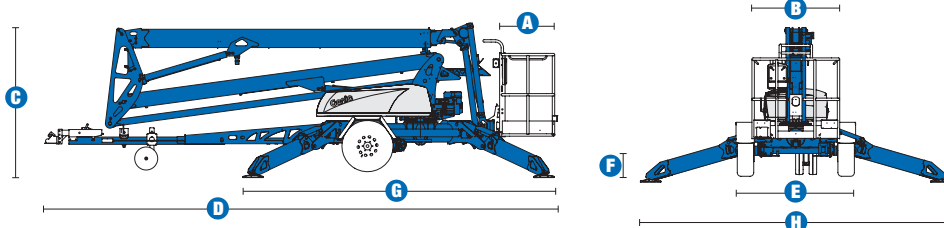


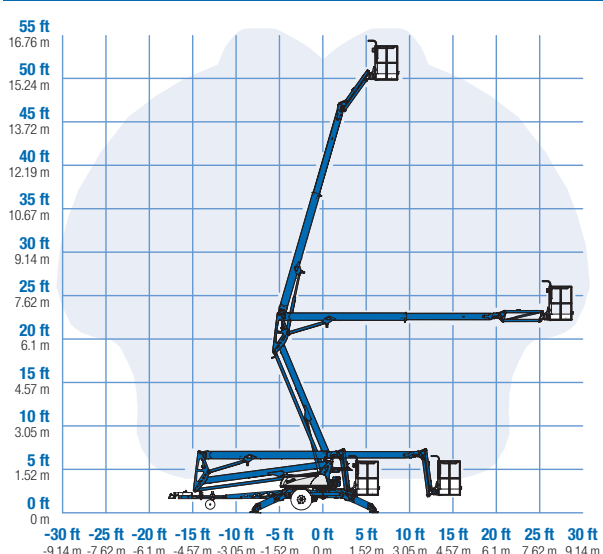
Specifications



MODEL TZ™-50

MEASUREMENTS	Metric	US
Working height*	17.09 m	55 ft 6 in
Platform height	15.09 m	49 ft 6 in
Entry height	0.51 m	1 ft 8 in
Horizontal reach	8.89 m	29 ft 2 in
Clear outreach	7.04 m	23 ft 1 in
Up and over clearance	6.71 m	22 ft
A Platform length	0.68 m	2 ft 2.8 in
B Platform width	1.12 m	3 ft 8 in
C Height - stowed	2.00 m	6 ft 10 in
D Length - stowed	7.16 m	23 ft 6 in
E Width - stowed	1.68 m	5 ft 6 in
F Ground clearance - centre	0.25 m	10 in
G Length - outrigger footprint	4.37 m	14 ft 4 in
H Width - outrigger footprint	4.37 m	14 ft 4 in

RANGE OF MOTION TZ™-50



PRODUCTIVITY

Lift capacity - standard	200 kg	440 lbs
Lift capacity - rotating platform	200 kg	440 lbs
Jib boom	1.25 m	4 ft 1 in
Jib working range	135°	135°
Self leveling platform	2.5° standard	
Platform rotation option	160° hydraulic	
AC power to platform	standard	
Turntable rotation	359° non-continuous	
Outrigger leveling capability	10°	10°
Drive speed	1.37 km/h	0.85 mph
Gradeability**	20%	20%
Towing speed rate	97 km/h	60 mph
Tongue weight	100 kg	220 lbs
Surge and parking brakes	standard	
Controls	variable speed system	
Tyres	ST 225/75 R15	
Coupler	5.08 cm (2 in) hitch coupler standard	

POWER

Power source - standard	24V DC (four 6 V 225 Ah batteries)	
Power source - option	Hybrid DC/Gas Honda 4.1 kW (5.5 hp)	
Fuel tank capacity	3.6 L	0.95 gal
Hydraulic tank capacity	18 L	4.75 gal
Hydraulic system capacity	30 L	8.0 gal

WEIGHT***

Australia - drive opt	2,200 kg	4,850 lbs
- without drive opt	2,040 kg	4,497 lbs

STANDARDS COMPLIANCE ANSI A92.2, CSA C225, CE Compliance, AS 1418.10

* The metric equivalent of working height adds 2 m to platform height. U.S. adds 6 ft to platform height.
 ** Gradeability applies to driving on slopes. See operator's manual for details regarding slope ratings.
 *** Weight will vary depending on options and/or country standards.

Features

STANDARD FEATURES

MEASUREMENTS

- 17.09 m (55 ft 6 in) working height
- 8.89 m (29 ft 2 in) horizontal reach
- Up to 227 kg (500 lbs) lift capacity

PRODUCTIVITY

- 0.68 m x 1.12 m (2 ft 3 in x 3 ft 8 in) aluminium platform
- 160° hydraulic platform rotation
- 5.08 cm (2 in) ball coupler
- ST 225/75 R15 tyres
- Industry leading working envelope
- Extension boom
- Self-leveling platform
- 4 ft jib with 135° working range
- Hydraulic outriggers
- Automatic 10° leveling system
- Outrigger interlocks
- Mechanical parking brake
- Hydraulic surge brakes
- Auxiliary pump down
- Combination hitch with coupler lever lock
- Dual jockey wheels
- 359° non-continuous turntable rotation
- Easy to access batteries
- Hour meter
- Tilt alarm / sensor
- Illuminated outrigger indicators
- Full size spare tyre
- Operational warning beacon package
- Non-marking outrigger footpads

POWER

- 24 V DC power source (four 6 V 225 Ah batteries)
- Hybrid Honda 4.1 Kw (5.5 Hp) 45 amp charging system
- Universal 20 amp smart charger

OPTIONS & ACCESSORIES

PRODUCTIVITY

- Drive and set option with electric brakes
- Combination hitch
- Wheel chocks
- Fluorescent tube caddy
- Battery charge indicator (BCI)
- Tool tray

POWER OPTIONS

- 240 V power to platform



Genie Australia – Toll free number 1800 788 633

Brisbane (Head Office)
33 Kimberley Street
Darra QLD 4076

Sydney
74 Glendenning Road
Glendenning NSW 2761

Melbourne
374 Hammond Road
Dandenong VIC 3175

Perth
83 Bannister Road
Canning Vale WA 6155

Genie United States Distributed by:

18340 NE 76th Street
P.O. Box 97030
Redmond, Washington
98073-9730

Effective Date: April, 2009. Product specifications and prices are subject to change without notice or obligation. The photographs and/or drawings in this document are for illustrative purposes only. Refer to the appropriate Operator's Manual for instructions on the proper use of this equipment. Failure to follow the appropriate Operator's Manual when using our equipment or to otherwise act irresponsibly may result in serious injury or death. The only warranty applicable to our equipment is the standard written warranty applicable to the particular product and sale and we make no other warranty, express or implied. Products and services listed may be trademarks, service marks or trade-names of Terex Corporation, Genie Industries, Inc. and/or their subsidiaries in the U.S.A. and many other countries and all rights are reserved. Terex® is a Registered Trademark of Terex Corporation in the U.S.A. and many other countries. Genie is a Registered Trademark of Genie Industries, Inc. in the U.S.A. and many other countries. Genie is a Terex Company. © 2009 Terex Corporation.