

# 800 Series

## ARTICULATING BOOM LIFTS



800A  
800AJ

[www.jlg.com](http://www.jlg.com)

**JLG**®

# Performance at the Highest Level Yet



Introducing the new Models 800A and 800AJ articulating boom lifts from JLG, representing the most original thinking ever in the 80 ft. (24 m) class.

The 800 Series was designed from the operator's point of view, addressing your needs from the platform down. A quick look at standard features—such as the new QuikStik™ boom, an operator's tool tray, and a control console with 40% fewer switches—shows that these machines were built for the person in the platform.



## New QuikStik Boom Provides Optimum Productivity

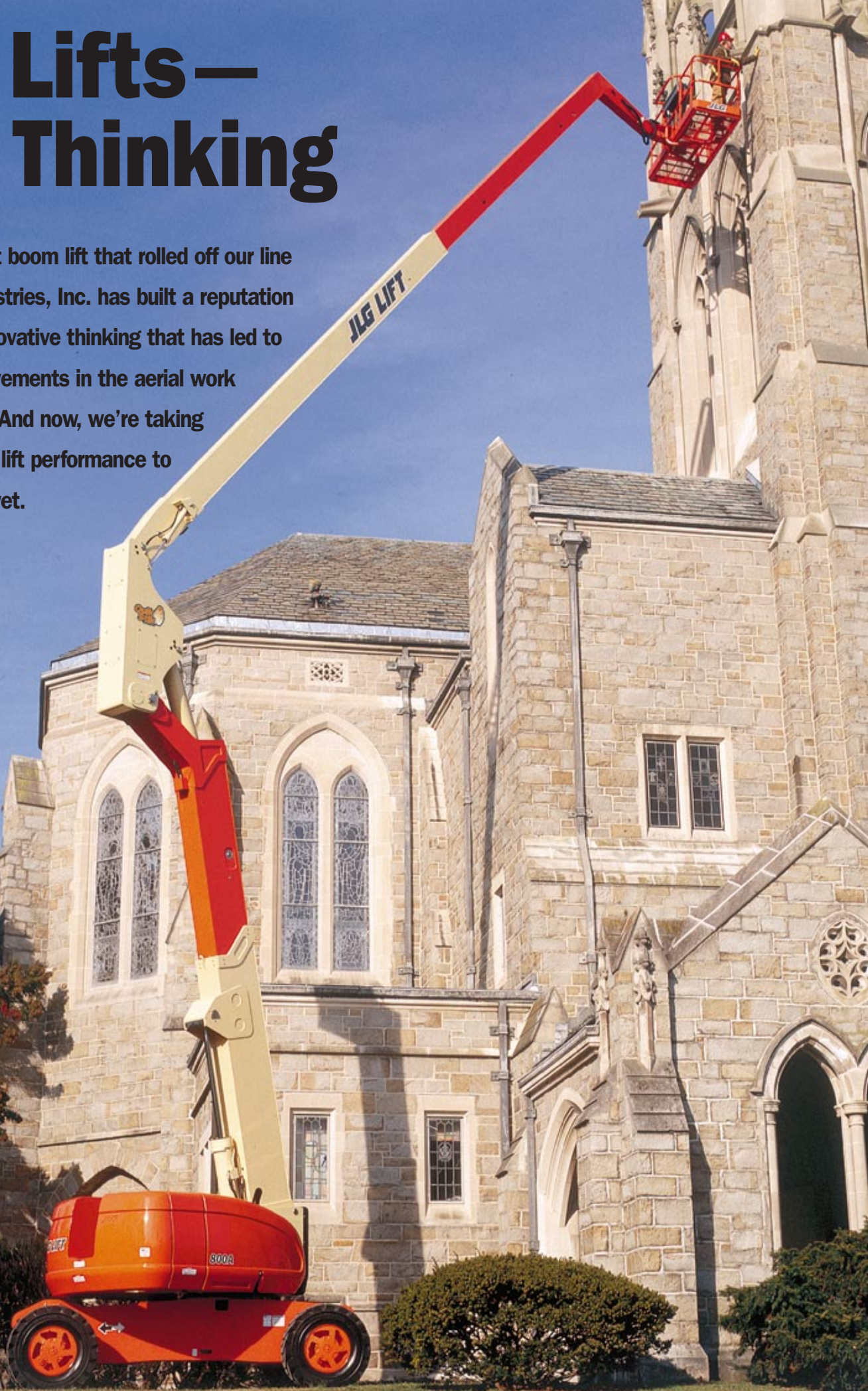
You asked for faster duty cycles up and down—so we invented the exclusive\* QuikStik boom. This new boom design allows the platform to be lowered to the ground while the tower boom is fully raised and extended. What's more, it links two lifting actions, simultaneously raising both the upper boom and the tower boom. With this feature, the operator can go from ground level to full elevation in less than 50 seconds.

\*Patent pending.



# New Lifts— New Thinking

From the very first boom lift that rolled off our line in 1970, JLG Industries, Inc. has built a reputation for the type of innovative thinking that has led to continuous improvements in the aerial work platform industry. And now, we're taking articulating boom lift performance to the highest level yet.



## Available With or Without an Articulating Jib

You want reach versatility—so we're offering the 800AJ with a 6 ft. (1.37 m) articulating jib boom for extra positioning capability at the elevated work position. Or you can choose the 800A without an articulating jib for a dual capacity rating of 500 lbs. (230 kg) unrestricted, or 1,000 lbs. (450 kg) at restricted boom outreach lengths.\*

*\*Except CE rating which is limited to 500 lbs. (230 kg) capacity.*



## Turntable Designed for Ease of Service

You want improved access for service—so we provide gull-wing hoods for full access to all engine components, including fuel and hydraulic oil fill ports. A swing-out engine tray provides access to both sides of the engine, and service personnel can work in a convenient, walk-in position. A modular valve manifold consolidates all hydraulic valves and service ports to one location and a bolt-in swing drive system provides ease of backlash adjustment.

## Oscillating Axle

You want improved productivity around construction sites—so we offer an optional oscillating axle—a JLG exclusive in the 80 ft. boom lift class. You get a smoother ride and better traction for improved productivity.



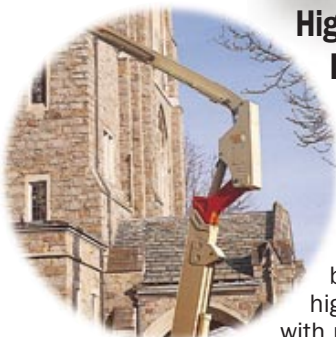
## The Industry's Best Reach Envelope

You want an optimal reach envelope—and we deliver 32 ft. (9.75 m) of up and over clearance, and over 51 ft. (15.55 m) of horizontal outreach.



## High Strength Boom Increases Rigidity

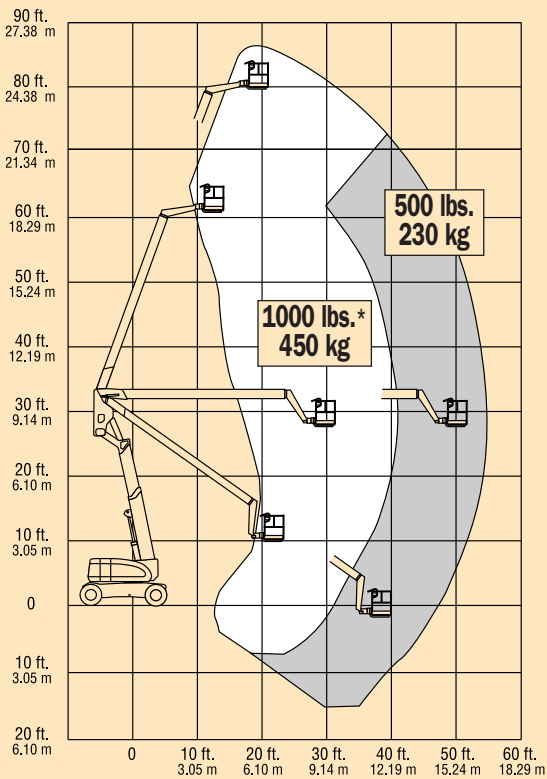
You want a feeling of confidence at 80 ft. and less lateral and vertical deflection of the booms. Through computerized stress modeling and testing, we determined dynamic loads and built a more rigid boom made of high strength steel, and a chassis with minimal deflection under loads.



## A Soft Stop Due to Cushion Lift Cylinder

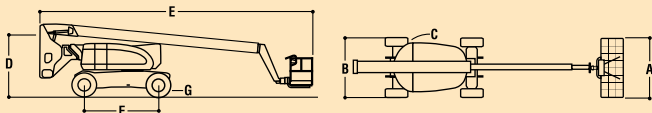
You want a smoother ride—and we deliver full proportional controls and a cushion cylinder on the upper boom lift cylinder so the lift speed automatically slows down before the cylinder strokes out at full extension.

# JLG MODEL 800A



## REACH SPECIFICATIONS

Platform Height	80 ft. (24.38 m)
Horizontal Reach	53 ft. (16.15 m)
Up and Over Height	32 ft. 1 in. (9.78 m)
Swing	360 Degrees Continuous
Platform Capacity-Restricted	500/1000 lbs.* (230 kg/450 kg)
Platform Capacity-Unrestricted	500 lbs. (230 kg)
Platform Rotator	180 Degrees Hydraulic



## DIMENSIONAL DATA

A. Platform Size	36 in. x 72 in. (0.91 m x 1.83 m)
B. Overall Width	8 ft. (2.44 m)
C. Tailswing	2 ft. 6 in. (76 cm)
D. Stowed Height	9 ft. 10 in. (3.0 m)
E. Stowed Length	36 ft. 11 in. (11.25 m)
F. Wheel Base	10 ft. (3.05 m)
G. Ground Clearance	12 in. (30 cm)
Gross Vehicle Weight**	34,200 lbs. (15,513 kg)
Max. Ground Bearing Pressure	76 psi (5.3 kg/cm <sup>2</sup> )

## CHASSIS

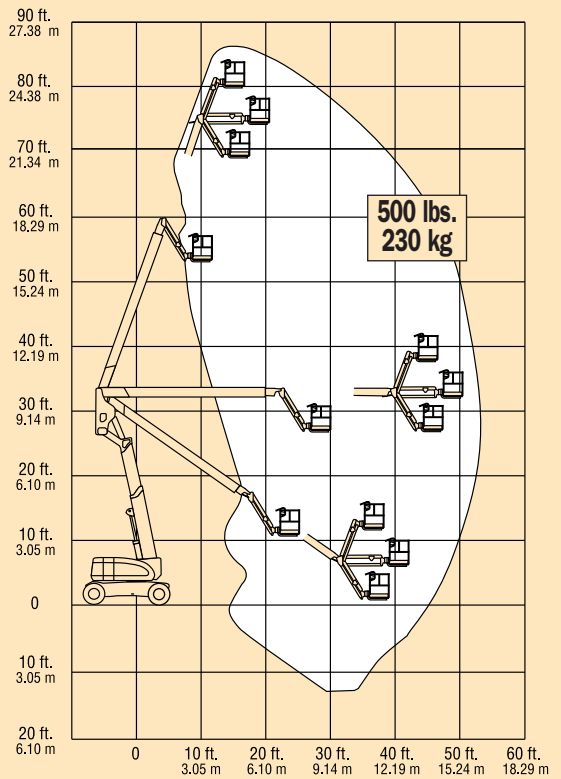
Drive Speed 2WD or 4WD	3.0 MPH (4.8 kph)
Gradeability 2WD	30%
Gradeability 4WD	45%
Turning Radius, (Inside/Outside)	
800A 2WS	12 ft./22 ft. 6 in. (3.66 m/6.86 m)
800A 4WS	7 ft./14 ft. 6 in. (2.13 m/4.42 m)
Tires/Type-2WD	385/65 x 19.5 Lug Tread
Tires/Type-4WD	445/55 x 19.5 Wide Lug Tread

## POWER SOURCE

Dual Fuel Engine, Ford LRG-425	82 hp (61 kW)
Diesel Engine, Deutz F4M1011F	65 hp (48 kW)
Fuel Tank Capacity	39 gal. (147.6 L)
Hydraulic Reservoir	40 gal. (151.4 L)
Auxiliary Power	12V DC

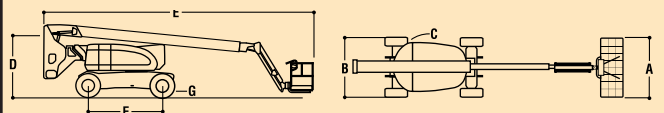
\*Except CE rating. \*\*Certain options or country standards will increase vehicle weight.

# JLG MODEL 800AJ



## REACH SPECIFICATIONS

Platform Height	80 ft. (24.38 m)
Horizontal Reach	51 ft. 10 in. (15.8 m)
Up and Over Height	32 ft. 1 in. (9.78 m)
Swing	360 Degrees Continuous
Platform Capacity-Unrestricted	500 lbs. (230 kg)
Platform Rotator	180 Degrees Hydraulic
Jib (Range of Articulation)	130 Degrees (+70, -60)



## DIMENSIONAL DATA

A. Platform Size	36 in. x 72 in. (0.91 m x 1.83 m)
B. Overall Width	8 ft. (2.44 m)
C. Tailswing	2 ft. 6 in. (76 cm)
D. Stowed Height	9 ft. 10 in. (3.0 m)
E. Stowed Length	36 ft. 6 in. (11.13 m)
F. Wheel Base	10 ft. (3.05 m)
G. Ground Clearance	12 in. (30 cm)
Gross Vehicle Weight*	34,200 lbs. (15,513 kg)
Max. Ground Bearing Pressure	76 psi (5.3 kg/cm <sup>2</sup> )

## CHASSIS

Drive Speed 2WD or 4WD	3.0 MPH (4.8 kph)
Gradeability 2WD	30%
Gradeability 4WD	45%
Turning Radius, (Inside/Outside)	
800A 2WS	12 ft./22 ft. 6 in. (3.66 m/6.86 m)
800A 4WS	7 ft./14 ft. 6 in. (2.13 m/4.42 m)
Tires/Type-2WD	385/65 x 19.5 Lug Tread
Tires/Type-4WD	445/55 x 19.5 Wide Lug Tread

## POWER SOURCE

Dual Fuel Engine, Ford LRG-425	82 hp (61 kW)
Diesel Engine, Deutz F4M1011F	65 hp (48 kW)
Fuel Tank Capacity	39 gal. (147.6 L)
Hydraulic Reservoir	40 gal. (151.4 L)
Auxiliary Power	12V DC

\*Certain options or country standards will increase vehicle weight.

# PERFORMANCE FEATURES



## Controls Designed for Ease of Operation

### Platform Control Console

Features an improved layout and a 40% reduction in the number of switches and levers for ease of operation and reduced operator training time.

One-hand drive and steer provides improved travel control, while one-hand control of lift and swing provides for more efficient and accurate positioning of the basket around elevated work sites.

A variable speed dial enables smoother proportional control of boom telescope, platform rotation, and jib functions. A console light panel informs the operator of various condition sensors such as fuel level, engine distress, and control enable status.



### Ground Control Console

Features a three-dimensional decal and a detailed light panel that reports the status of specified

machine conditions, including various self-diagnostic maintenance sensors.

## Standard Features

- Low Mount Platform  
36 in. x 72 in. (0.91 m x 1.83 m)
- Oscillating Axle
- Inward Swinging Gate
- 180 Degree Hydraulic Platform Rotator
- 110V-AC Receptacle in the Platform
- 5 Degree Tilt Alarm/Indicator Light
- Swing-Out Engine Module
- 12V DC Auxiliary Power
- Hourmeter
- Proportional Controls
- Gull-Wing Engine Hood
- Hydrostatic Drive
- Operator's Tool Tray
- Rim Protector Lug Tread Tires
- Platform Console Machine Status Light Panel<sup>1</sup>
- Lifting/Tie Down Lugs
- Horn

1. Provides indicator lights at platform control console for system distress, low fuel, 5 degree tilt light and foot switch status.
2. Includes engine block heater (Ford) or ether assist (Deutz), battery heater and oil tank heater.
3. Includes console cover, boom wipers and cylinder bellows.

## Available Options

- Platform: 36 in. x 96 in. (0.9 m x 2.44 m)
- Platform Work Lights
- 1/2 in. (1.3 cm) Air Line to Platform
- Soft Touch System 6 ft./8 ft.
- Welding Lead to Platform
- Foam Fill for 15 x 19.5 Tires
- Foam Fill for 18 x 19.5 Tires
- 2500W Generator
- Head and Tail Lights
- Travel Alarm
- Flashing Amber Beacon
- Alarm Package
- 65 hp Isuzu Diesel in lieu of Deutz
- 43.5 lb Propane Tank
- Cold Weather Start Kit (Ford)<sup>2</sup>
- Cold Weather Start Kit (Deutz)<sup>2</sup>
- Hostile Environment Package<sup>3</sup>
- All Motion Alarm



## Operator's Platform Features Handy Tool Tray

This unique tool tray provides a handy storage area for tools, cups, fasteners and other work materials. The 800 Series offers a rugged platform design made from high strength square tube steel railing. It is constructed of five individually replaceable sections, so you can replace the entire platform, or just a single section. The low mounting of the platform to the boom nose reduces underhanging components.

## The JLG 1 & 5 Warranty

JLG Industries, Inc. backs our products with our exclusive "1 & 5" Warranty. We provide coverage on all products for one (1) full year, and cover all specified major structural components for five (5) full years. Due to continuous product improvements, we reserve the right to make specification and/or equipment changes without prior notification. This machine meets or exceeds applicable OSHA Regulations in 29 CFR 1910.67, 29 CFR.1926.453, ANSI A92.5-1992, as originally manufactured for intended applications.

### JLG Industries, Inc.

1 JLG Drive  
McConnellsburg, PA 17233-9553  
Telephone 717-485-5161  
Toll-free in US 877-JLG-LIFT  
Fax 717-485-6417  
www.jlg.com